



INSTRUCTION MANUAL

SEASONING DISPENSER

(BW04)





SEASONAL DISPENSER (BW04)

7W, 150ML EACH

LITHIUM BATTERY CONTROL

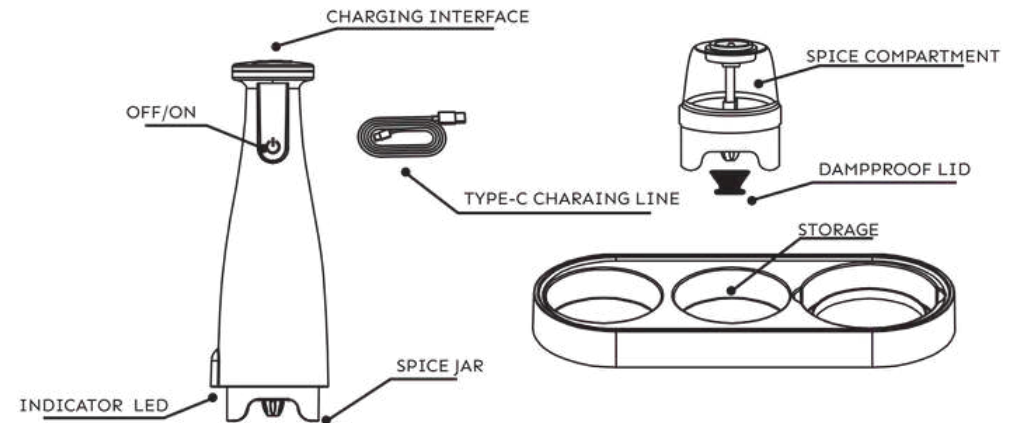
USER INSTRUCTIONS

To ensure your safety and the proper functioning of the appliance, please follow these instructions carefully.

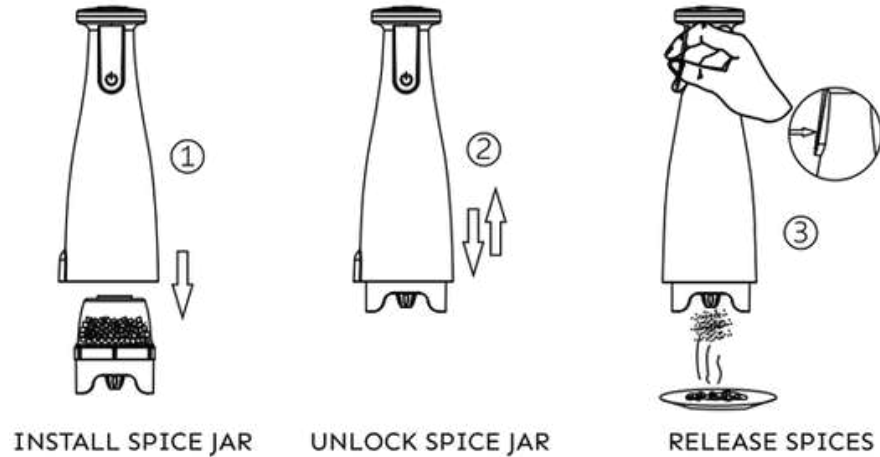
- This appliance should not be used by individuals (including children) with reduced physical, sensory, or mental capabilities or a lack of experience and knowledge unless they are supervised by a responsible person who has been properly instructed on its safe use.
- Always keep the appliance out of reach of children. Do not allow children to use or play with the appliance. Adult supervision is essential.
- Never leave the appliance unattended while it is in operation.
- Inspect the appliance regularly for any signs of damage. Do not use it if the appliance, plug, or cord is damaged in any way. If any issues are found, stop using the appliance and contact Blendwel Customer Service for assistance.
- This appliance is intended for household use only. Use it only as described in this instruction manual.
- Use only the charger provided with the appliance. Do not attempt to charge the appliance with any other charger, as this may cause damage or pose a safety risk.
- Do not use the appliance in areas with explosive or flammable fumes.
- Do not incinerate the batteries, even if they are damaged, as they may explode in fire.

- This appliance contains nickel-metal hydride (NiMH) batteries. These must be recycled or disposed of properly in accordance with local regulations. Do not burn or compost the batteries, as they may explode at high temperatures.
- Do not use the appliance if damaged—contact Blendwel Customer Service

DESCRIPTION OF PARTS



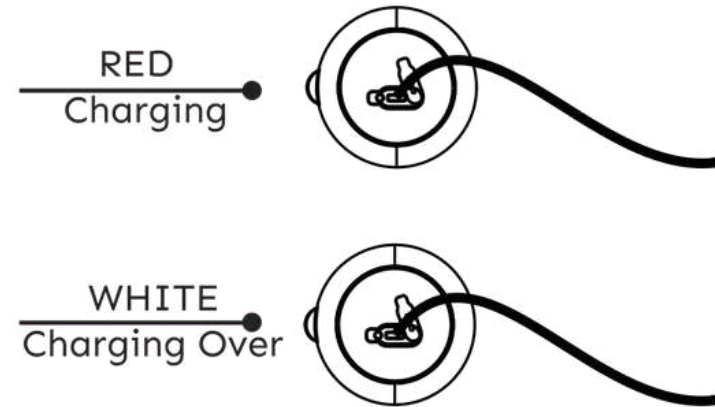
USAGE GUIDELINES



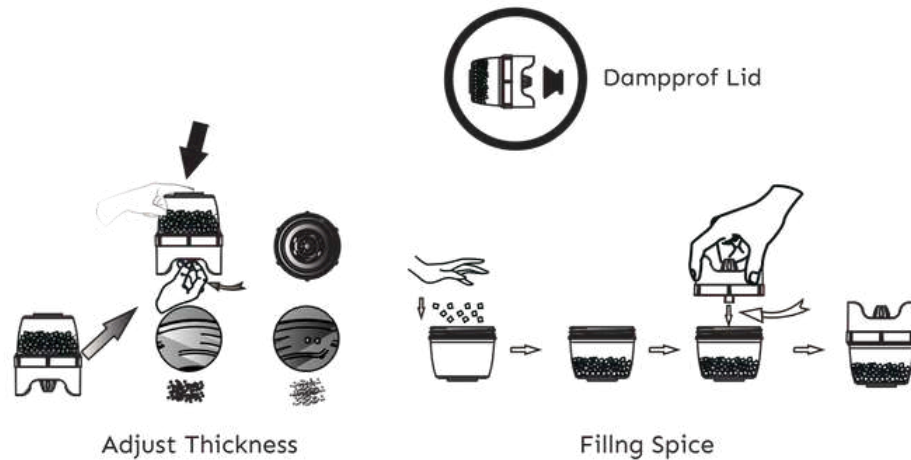
1. Align the spice jar with the grinder and press down firmly until it locks into place.
2. To change the jar, press down to release the current one, then attach a new jar the same way.
3. Point the grinder where you want to add the spice. Press and hold the button to grind and release. Let go of the button to stop.

CHARGE

- To charge the appliance, insert the USB cable horizontally into the top slot of the charging base.
- The red indicator light will turn on to show that charging has started. Charging takes approximately 2 to 4 hours.
- Once fully charged, the red light will turn white.



ADDITION AND ADJUSTMENT



- To fill the spice jar, twist open it and add your desired dry spices (such as sea salt, pepper, or similar spices with a diameter under 5 mm), filling the jar up to two-thirds ($2/3$) full. Then, securely tighten the base by turning it clockwise.
- You can adjust the coarseness (grinding thickness) using the knob located at the bottom of the spice jar. To do this, hold the top of the jar firmly with one hand (as shown by the black arrow in the diagram) and turn the knob with your other hand until you reach the desired grind size.

- If you're unable to open the jar, hold the edge of the jar base firmly and try again. It should come off easily, but if you still face difficulty, please contact Blendwel Customer Service for assistant.

WARRANTY REGISTRATION

Product Name:

Seasoning Dispenser

Model Number:

BW04

Product Serial No. :

TO REGISTER YOUR
WARRANTY



SCAN HERE





Follow us on:

📷 @blendwelindia 🌐 www.blendwel.com

Taatva Appliances, No.830, 5th A Cross, 9th
Main, HRBR Layout, Kalyan Nagar, Bangalore
- 560043, Karnataka, India

TO REGISTER YOUR
WARRANTY

